



FARGO® DTC®1500 WINDOWS PRINTER DRIVER

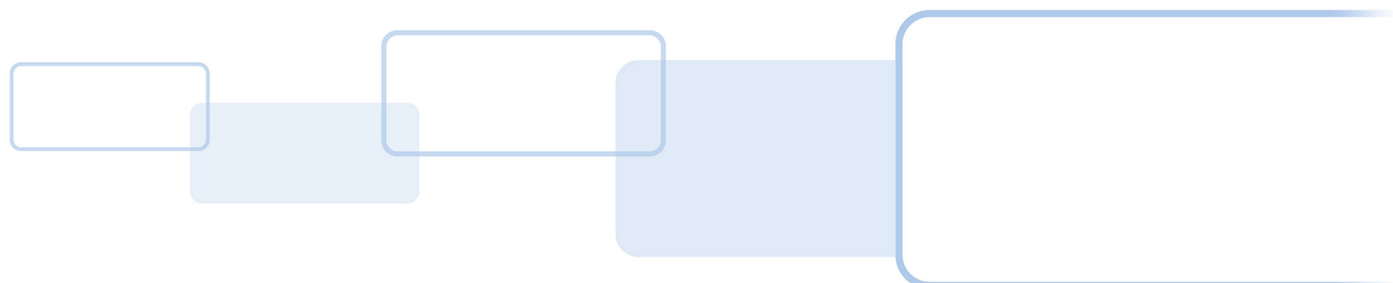
RELEASE NOTES

Driver Version: 5.4.0.4

Driver Part Number: SFW-01357

PLT-04544, Rev. A.0

October 2019



Copyright

© 2019 HID Global Corporation/ASSA ABLOY AB. All rights reserved.

This document may not be reproduced, disseminated or republished in any form without the prior written permission of HID Global Corporation.

Trademarks

HID GLOBAL, HID, the HID Brick logo, the Chain Design, DTC, and FARGO are trademarks or registered trademarks of HID Global, ASSA ABLOY AB, or its affiliate(s) in the US and other countries and may not be used without permission. All other trademarks, service marks, and product or service names are trademarks or registered trademarks of their respective owners.

Revision history

Date	Description	Revision
July 2019	Release Notes for Driver version 5.4.0.4.	A.0

Contacts

For additional offices around the world, see www.hidglobal.com/contact/corporate-offices.

Americas and Corporate	Asia Pacific
611 Center Ridge Drive Austin, TX 78753 USA Phone: +1 866 607 7339 Fax: +1 949 732 2120	19/F 625 King's Road North Point, Island East Hong Kong Phone: +852 3160 9833 Fax: +852 3160 4809
Europe, Middle East and Africa (EMEA)	Brazil
Haverhill Business Park, Phoenix Road Haverhill, Suffolk, CB9 7AE United Kingdom Phone: +44 (0) 1440 711 822 Fax: +44 (0) 1440 714 840	Condomínio Business Center Av. Ermano Marchetti, 1435 Galpão A2 - CEP 05038-001 Lapa - São Paulo / SP Brazil Phone: +55 11 5514-7100

HID Global Technical Support: www.hidglobal.com/support.

1 Scope

These release notes provide information on the FARGO® DTC®1500 Windows Printer Driver version 5.4.0.4. Included are product enhancements, fixes, known issues, and limitations since the previous release.

Note: The reference numbers associated with these features, issues, and fixes are from internal HID Global tracking systems.

2 New features and enhancements

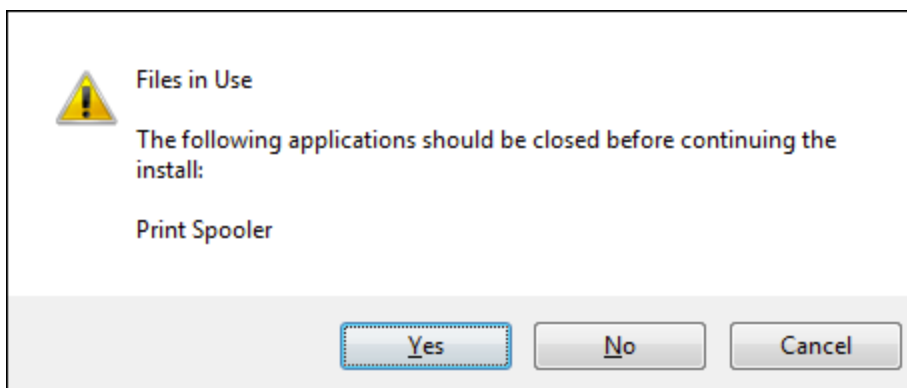
- Updated installer for support of Unicode languages (TTP-10894).
- Supported operating systems:
 - Windows 7 x86/x64
 - Windows 10 x86/x64
 - Windows Server 2008 R2
 - Windows Server 2012
 - Windows Server 2012 R2
 - Windows Server 2016
 - Windows Server 2019

3 Resolved issues

- Resolved an issue where the printer would not work on Windows 10 build 1903 or later when the **Enable bidirectional support** option in the **Ports** tab of the **Printer Preferences** was selected. (ISSUE-11650)
- Updated the installer to improve support for Unicode languages such as Chinese (ISSUE-10894)

4 Known issues

The following dialog box is sometimes displayed during driver installations (SCSEP-77):



Clicking **Yes** or **No** causes the print spooler (or other listed applications) to close. The print spooler is then restarted which can result in the print jobs in the spooler to be paused or deleted.

Clicking **Cancel** aborts the driver installation.

